

Capitol.

Bracknell // Berkshire // RG12 8FZ

Floor	Suite	Condition	Sq Ft	Sq M
1st	North	CAT A	10,921	1,014.6
	West	CAT A+	4,301	399.6
LG	-	Fully fitted	9,892	918.99
Total	-	-	25,114	2,333.19

For indicative purposes only.
Not to scale.

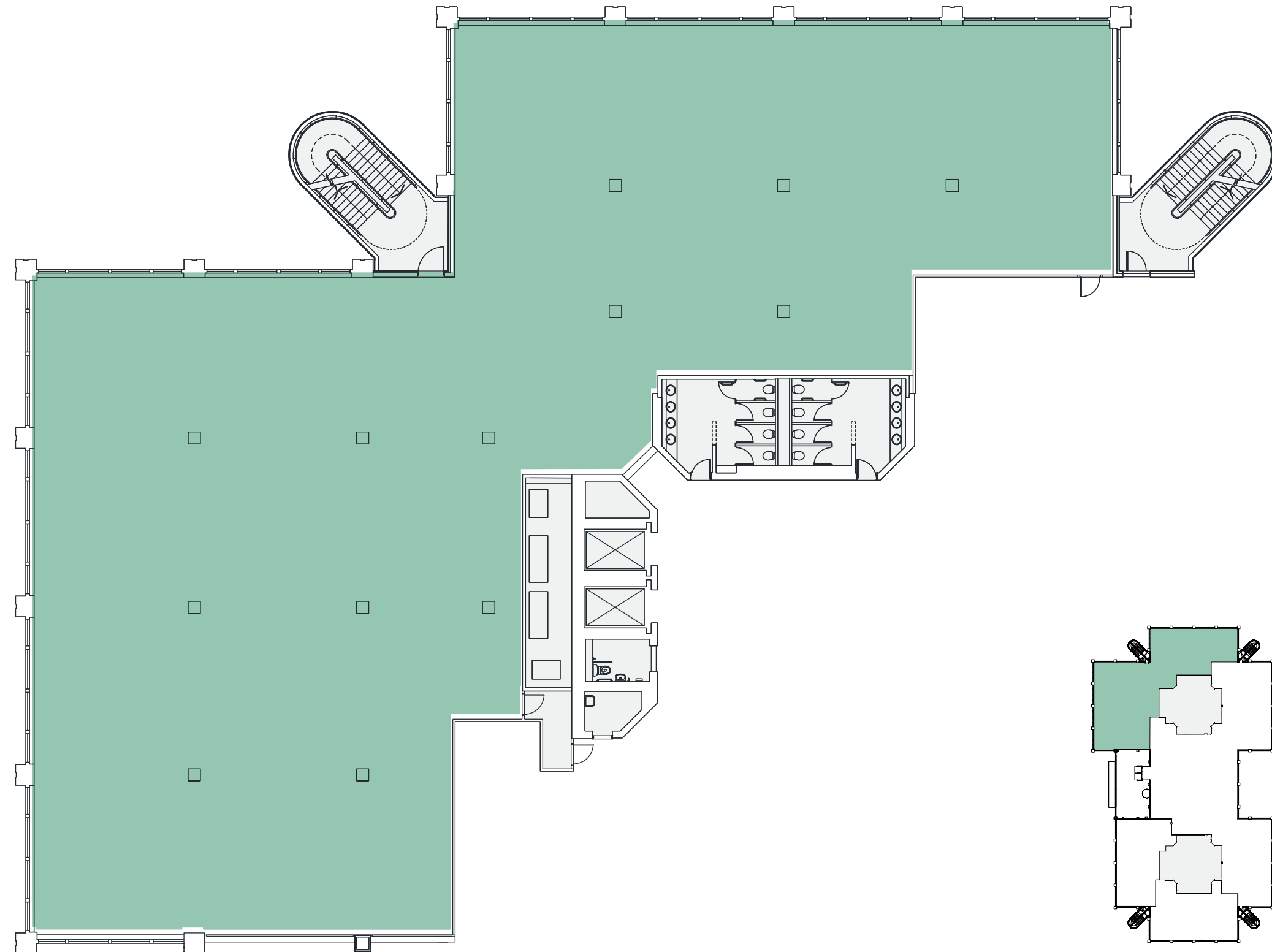


- Cat A office
- Fully fitted office
- Core

Part 1st floor (north)

10,921 sq ft / 1014.6 sq m

Berkshire Way



Part 1st floor (west)

4,301 sq ft / 399.6 sq m

Open plan desk	42
7 person meeting room	1
4 person meeting room	1
Welcome area	1
Collaboration space	1
Kitchen / breakout area	1
Zoom rooms	2

