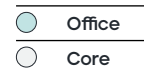
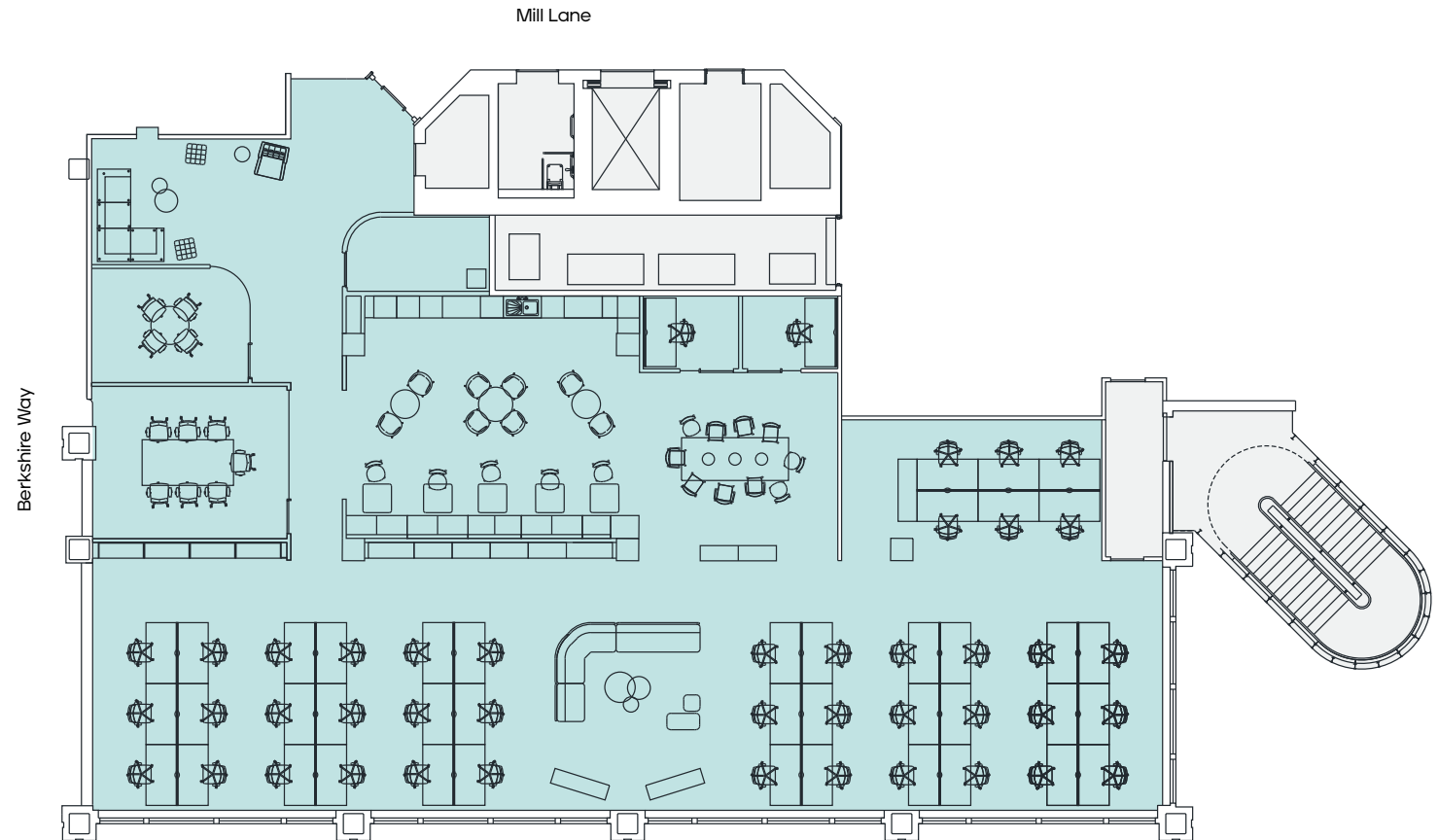


Part 1st floor (west)

Office
4,301 sq ft

Area	No. of seats
Open plan desk	42
Zoom room	2

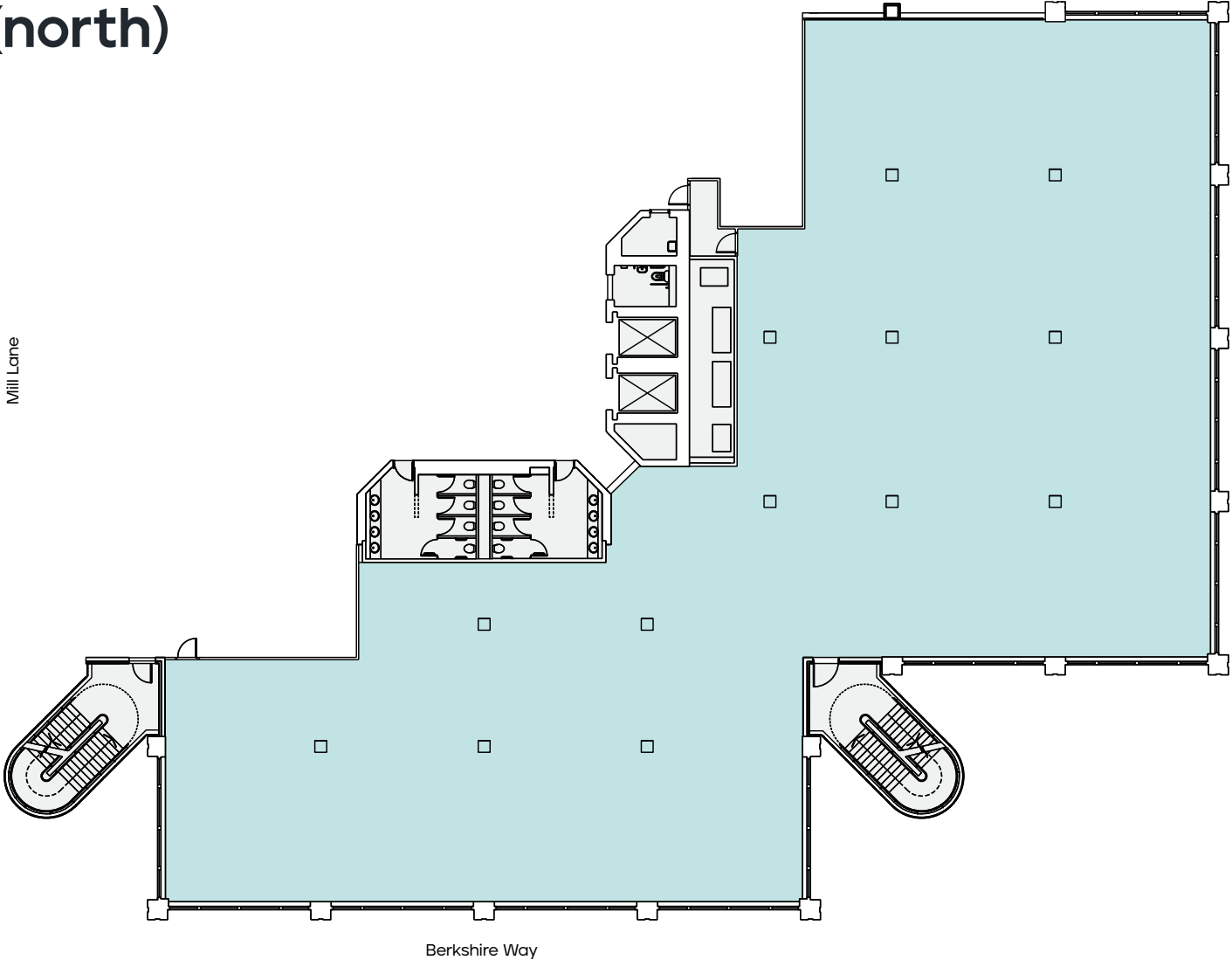
Area	No. of
7 person meeting room	1
4 person meeting room	1
Welcome area	1
Collaboration space	1
Kitchen / breakout area	1



For indicative purposes only. Not to scale.

Part 1st floor (north)

Office
10,921 sq ft



- Office
- Core



For indicative purposes only. Not to scale.